

Strupp/Brumm Products List

Listed in this issue are the clinical products and materials that we use in our dental practice. Many of the materials have changed since last year's Review issue. Check back at the web site for changes throughout the year as we find new products and new product suppliers.

Acrylic

Jet Acrylic/Powder and Liquid (for all provisional restorations)

[Lang Dental Mfg. Co./Local Supplier](#)

Jet Acrylic is still the standard in

Our office for provisionals, primarily because, unlike composite materials, it can be trimmed to a very fine margin without flaking away. Also, with air abrasion, extra retention can be achieved, unlike with Bisacryl materials. *Jet Acrylic* is exothermic; however, the heat problem is mitigated because the acrylic is never allowed to heat up in the mouth. Provisionals in Our office are made with an indirect technique. Provisionals made of Jet can be flexed for easy removal when *Durelon* is used as the provisional cement.



Super-T (provisional material used for joining sectioned provisionals or repairing broken provisionals in the mouth and painting in margins on models and in the mouth).



American Consolidated Mfg. Company

Super-T is used primarily as a repair material, although it can also be used to add contacts. It sets hard in one minute, so care must be taken not to lock a provisional in when painting in intra-orally. Keep out of light.

Acrylic Finishing

For straight handpieces:

H1-023 ROUND BUR (for relieving inside of provisionals)

(261E-11) 023 CARBIDE BUR (for refining embrasure areas)

(858-11) 012 CARBIDE BUR (for defining occlusal anatomy)

(858-11) 014 DIAMOND (for refining interproximals)

(894-11) 060 LAB DIAMOND (for creating negative contour and refining provisionals)

(365-220) SERRATED DIAMOND DISC (for separating provisionals)

(H72-11) LAB CARBIDE (for gross trimming of provisionals)

(H79SG-11) 070 CARBIDE BUR (for cutting stone)

6934-11-300 DIAMOND STONE CUTTING DISC (used with indirect provisional technique to trim away stone from acrylic to prevent breaking provisionals that are thin - for all ceramics)

911H-11-180 HyperFlex Double sided Diamond (separating and contouring)

943-11-100 Miniflex Double Sided Diamond (fine trimming, small proximities)

934-11-100 VisionFlex Open-Meshed (ultra fine separating and contouring)

(H77E-023, H77E-023F & H77E-029, H77E-029F) CARBIDE BUR (for die trimming)

(H77) Lab Carbide (for gross trimming)

[Brasseler USA](#)

Acrylic Polisher

Polycril Advance pumice alternative for polishing acrylic & resin material. (polishing provisionals & dentures)
Local supplier



Alginate Mixer

Alginator

(Mechanical alginate mixer saves 30% on alginate cost due to less waste and creates a superior mix)
[DUX Dental/Local Supplier](#)



If you are not using an alginator, you should be. It saves time, energy and cuts alginate costs.

Clean & Lube Spray (Used after every alginate mix to keep bowl flexible)
[DUX Dental](#)



Air Abrasion Devices

Rondo Flex 2013

(Delivers a narrow stream of *CoJet Sand* [3M ESPE] to remove residual *Durelon* cement from preparations and to clean before cementation and placement of direct composites. Also



roughens porcelain before repairing.)
[Kavo America Corp.](#)

It creates a sandy aerosol; therefore, masks must be worn and the patient's face must be covered.

CoJet Sand [3M ESPE]
Blast-Coating Agent 30um particles.
[3M ESPE//Henry Schein](#)



Anesthetics

Carbocaine - 3% (no vasoconstrictor)
Cook-Waite/Local Supplier

Citanest - 4% Plain
Dentsply Pharmaceutical/Local Supplier

Marcaine - 0.5% (1:200,000 epinephrine)
Cook-Waite /Local Supplier

Septocaine - 4% Articaine hydrochloride (1:100,000 epinephrine)
[Septodont, Inc./Local Supplier](#)

Our primary choices for anesthetics are *Citanest* and *Marcaine*. *Anesthetics* should never be administered with a 30 gauge needle for a mandibular block due to possible paresthesia. *Septocaine* can be used for infiltration of all mandibular teeth however it is less effective for molars.

Anesthetics (Topical)

Topicale - (Topical anesthetic gel)



[Premier Dental Products Co.](#)

Topicale can be used to anesthetize tissue before injections, but it must be placed on dry tissue and must stay in place for at least one minute. Tissue will slough if it is not rinsed away thoroughly.

Antimicrobials (Intraoral)

Pure 4% CHG – [Best Buy Discount Dental Supply](#)

Tubulicid (Blue) - [Temrex](#)

Clorox Bleach (undiluted) - *Local Grocery*

The three antimicrobials above represents the “*holy triad*” of *bacterial control*. This is the surface treatment of teeth that is applied prior to core buildups and before cementation of provisionals. It is not used with self-etching primers such as *Clearfil SE Protect* and *ED Primer*.

Grain Alcohol (To kill microbes and flush eugenol from endodontically treated teeth prior to core buildup or post placement). *Local Liquor Store*

It is best to wait at least two weeks after endodontics to do core build-ups so the eugenol can partially dissipate. It is even better to use *AH26 [Dentsply]* as an endodontic sealer; it is a resin.

Articulating Ribbon

Madame Butterfly Silk (occlusal adjustment)
[Almore International, Inc.](#)



We have used silk articulating ribbons since the early days of Our career. As with any ribbon, there is a learning curve to using it properly.

Barriers

DeOx (Viscous glycerine-based liquid designed to prevent formation of an oxygen inhibition layer on the surface of resin composite materials when they are polymerized). Used during cementation of all ceramic restorations.

[Ultradent Products](#)



Oxyguard (Viscous gel used to block the oxygen from anaerobic setting *Panavia 21* and *Panavia F* cements. Also contains a polymerization accelerator to provide a more effective set). Used during cementation of metal based restorations.

[Kuraray USA, Inc./Local Supplier](#)

Opal Dam Resin barrier used to isolate and protect soft tissue with an impervious seal.

[Ultradent Products](#)



Base/Liner Material

Dycal® Radiopaque Calcium Hydroxide Composition

[Densply](#)



Flecks - (Zinc Phosphate - coronal seal for endodontically treated teeth)
[Mizzy Inc./Local Supplier](#)



We prefer *Enamel Shade Core Paste* as a base composite because it flows to the tooth more smoothly and is self cured. Light activated composite is placed afterwards.

Bite Record Material

Occlufast (Vinyl Polysiloxane bite registration material for centric bite records and indexes). It must remain in the month for 2 minutes.

[Zhermack/Henry Schein](#)



We use Occlufast primarily due to the density of the material and its quick set time.



Bleaching Solution

Take Home

Life-Like Bleaching Products (30% Carbamide peroxide.

[Life-Like Cosmetic Solutions](#)



We use *Life-Like Bleaching Products* to create a clinical result that works virtually 100% of the time. (30 minutes per day

Opalescence (20% & 35% Carbamide Peroxide)

[Ultradent](#)

In Office

Opalescence Boost (40% Hydrogen Peroxide)

[Ultradent](#)

Power bleaching – no light required

Brushes

Bend-a-Brush (Bendable, disposable brushes for applying Primer A & B)

[Centrix, Inc.](#)



Ball-Point Applicators Fine & Medium Heads - For precise applications of *ED Primer, A&B Primers and DE Resin*.
[Pinnacle Products/Local Supplier](#)



Microbrush X (For cleaning post spaces with the “holy triad” and carrying medicaments and bonding materials into post space)

[Microbrush International](#). - Local Supplier



Ultra Brush 2.0 (Replaces the sable brush for acrylic paint-in)

[Microbrush International](#). - Local Supplier

OptiClean (Kerr Dental)

- After Biologic

Reshaping:

Polish root

surface and

composites.

- **Polaris G80, G100**: Diamonds used for closed flap biologic reshaping.



Burs & Diamonds

DIAMONDS

[Brasseler USA](#)

[Pollard Diamonds](#)



- 846-012** (F61) (Sloping shoulder .8mm on end prepared on plane parallel to long axis of the root, mesial, distal, facial and lingual. This is the most frequently used diamond)
- 877K-012** (G61) (Thin tissue/proximal walls to avoid tissue contact. This is the second most frequently used diamond.)
- 877K-014** (G62) (Shallow chamfer)
- 877K-016** (G63) (Medium chamfer)
- 368-023** (302) (2 mm football for inner inclines of upper buccal cusps [onlays] and lingual reduction of anterior teeth.)
- 879K-012** "Long Skinny" (Thin chamfers and tight interproximals on all preparations)
- 878K-012** (G81)
- 878K-014** (G82)
- 878K-016** (G83)
- 878K-018** (G84)

- 801-010** (#2 round)
- 801-016** (#4 round)
- 6801-023** (#8 round) (Occlusal reduction of posterior teeth)

CARBIDES

[Brassler USA](#)

- 7702-010** (For refining all internal aspects for small teeth) 12 fluted.
- 7713-012** (For refining all internal aspects for large teeth) 12 fluted.
- 7901-009** (Flame shaped for fissurotomy)

SINGLE USE BURS

- #330 Carbide Clinic Pack** (Gross removal of old crowns and old fillings)
Midwest
- #1/2, 2, 4, 6, 8 Steel Round Latch Type Burs** (Slow speed decay removal) - [Sullivan Schein](#)

Cements (Composite Luting)

- Panavia F 2.0 Tooth Colored, White, Opaque and Light** (Dual cure resin-based cement system for metal, composite and ceramic etched and silanated restorations)
[Kuraray USA, Inc.](#)



Panavia 21 TC (For posts Only)
[Kuraray USA, Inc./Local Supplier](#)



Our primary cement for all restorations is **Panavia F 2.0 Light**.

Cements (Provisional)

Durelon - Polycarboxylate (Primary provisional cement)
[3M ESPE/Local](#)



Ceramic Primer

Clearfil Ceramic Primer #2250KA (Used for priming zirconia restoration prior to cementation. It has a molecule that works with zirconia)
[Kuraray USA, Inc./Local Supplier](#)



Research shows that **Clearfil Ceramic Primer** is one of the best ceramic primers on the market. However, it is important to use only primer that is less than a year old. It must be used on porcelain before and after try-in. The ceramic must be H₃PO₄ decontaminated/treated before silane application.

Composites (Direct Restorations)

G-aenial Universal Flo
[GC America](#)



We us BLW 95% of the time.
We do not do many posterior composites because We believe they are as inferior as amalgam. We place 90% of the posterior direct restorations with *Enamel Shade Core Paste* as transitional restorations before definitive restorations are placed at a later date.

Core Material

Enamel Shade Core Paste (For crown build-ups and caries control)

[Den-Mat Corp.](#)



The only core material We use is *Enamel Shade Core Paste* because of its physical properties and color. It is very strong and does not affect the color of thin all-ceramic restorations. (Not photo-activated).

Crown Removers

Richwil Crown & Bridge Remover
("Ju Ju Bees")

[Almore International, Inc.](#)



Towel Clamp Forceps and Mosquito Hemostats

[Hu-Friedy Co](#)
Local Supplier

The simplest way to remove a single-unit crown is with the *Richwil* remover. However, bridges are best removed with an instrument that

delivers an impact force to the tooth, such as the *Corona Flex Kavo* remover.

GC Removal Pliers (K.Y. Type)
[GC America](#)

Crown Seaters

Aidaco Bite Sticks (Wooden bite sticks that are used to seat posts and anterior all ceramic crowns.)

[Henry Schein/Temrex](#)



#2 Plastic Filling Instrument (PF1HF2) (Used to properly seat posterior restorations during try-in and cementation) We also use it to pack teflon tape in implant screw access closures.

[Hu-Friedy Co](#)



Dappen Dishes

Dapaway (Disposable dappen dish)
Dentsply/Local Supplier



To avoid contamination, the *Dapaway Dish* should never be touched inside the dish by fingers. Only hemostats or cotton pliers should be used to handle the dish. One should remove the dish from the bottom of the stack without touching the inside.

Dappen Dishes # 900-1878 (For mixing Super-T while making improvements to provisionals)
[Henry Schein/Local Supplier](#)



Glass Dappen Dish (For soaking retraction cord)
[Henry Schein/Local Supplier](#)



Dentin Bonding

All Bond 2 Kit

• *Uni-Etch BAC*
(32% phosphoric acid with benzalkonium chloride)

• *Primer A&B*
• *Dentin/Enamel Bonding Resin*

Used for core buildups and post cementation. It is compatible with *Panavia 21* and *All Bond 3* is not compatible with *Panavia 21*.

[Bisco Dental Products](#)



Clearfil SE Protect (Used for all photoactivated resin composites)
[Kuraray USA, Inc.](#)



ED Primer (One step bonding; etches and primes simultaneously and is hemostatic and antimicrobial for Panavia F 2.0. Panavia 21 has its own ED Primer 21.

[Kuraray USA, Inc.](#)



We use *Clearfil SE Protect* for all dentin bonding procedures that use photo-activated resin composites. We use *ED Primer* when cementing restorations with *Panavia F 2.0* or posts with *Panavia 21*. We use *ED Primer 21* with *Panavia 21*.

Dentin Desensitizer

Super Seal (2.9% potassium oxalate)
[Best Buy Discount Dental Supply](#)

Super Seal is an acid chelating potassium oxalate sealer and is always used after bonding procedures are complete, never before. *Super Seal* is applied to preps immediately after the last impression is removed. The preps are isolated from salivary contamination, Tubulicid Blue is applied to each prep for 60 seconds keeping the preps wet, then the preps are rinsed and 2 applications of *Super Seal* are applied to the preps. Salivary contamination must not occur during this process.



Teethmate Desensitizer Treatment of exposed dentin & post cementation
[Kuraray USA, Inc.](#)



Denture Relining

Coe-Soft (Resilient denture liner)
[GC America, Inc.](#)



Muco-Soft (Fast & simple chairside soft relines) [Parkell, Inc.](#)



Muco-Hard (Quickly restore long-term comfort and stability with chairside hard relines.) [Parkell, Inc.](#)



Prevident 5000 Varnish 5% Sodium Fl
[Colgate](#)

Used on all teeth that are root reshaped starting one week after periop-surgery. *Varnish* is also used on abfraction lesions or exposed root surfaces that are sensitive. All patients with definitive restorative or root surface exposure are put on daily *Prevident* use. High caries risk patients use it daily.



Diamond Cleaning Chips

Extend-A-Life
[Ultradent Products, Inc](#)



Extend-A-Life cleaning chips work well for removing the grinding debris and the red stain that accumulates

from marking ribbons from diamonds. Must be used with copious water.

Dispensers

Pure Floss Dispenser (Contact-Free)
[Jordco, Inc.](#)

Portionaid Dispensing Bottle
(Holds liquid in lower chamber; upper chamber measures and dispenses used for distilled water for alginates and *Stalite* for *Snap Stone*.)
[Almore, Inc.](#)

Dry Air System

Totally Clean and Dry Air System
[Best Buy Discount Dental Supply](#)



The system comprises a unique separation filter inserted into an air line that supplies a *DCI 3-Way Syringe*, which has both inputs hooked up to air only. Since no water feeds the syringe, small water droplets from the syringe will not contaminate your critically dry field. The *Dry Air System* is absolutely necessary to achieve successful dentin bonding.

DCI Tips #3059
[DCI/Sullivan-Schein Dental Products](#)



To clean syringe tips: soak in acetone, ultrasonic in acetone, ultrasonic in distilled water, then heat sterilize. Hard water deposits on these tips and can be removed with lime away.

Finishing Discs

FlexiDisc

[Cosmedent, Inc./Local Supplier](#)



Endodontic Irrigators

Stropko Irrigator (Used for irrigating and drying post spaces - used with *Appli-Vac Micro* yellow 20 ga needle tips)

Both from [Vista Dental](#)



Etching Agents

Ceram-Etch (Ceramic etch 9.5% Hydrofluoric Acid)

[Gresco Products, Inc.](#)

Ceram-Etch is a hydrofluoric acid product and must not be allowed near any soft tissue if used intraorally.



Uni-Etch with BAC (32% phosphoric acid with benzalkonium chloride for dentin/ enamel etch)

[Bisco Dental Products](#)

85% Phosphoric Acid (85% mixed with equal volumes of distilled water; pour acid into water; used to decontaminate restorations after try-in) – [Mallinckrodt Baker](#)



Sof-Lex Sandpaper Discs

[3M Dental Products Co./Local Supplier](#)



We use blue *Flexi-Discs* and *Sof-Lex Discs* for final restoration contour and polish for final margination of vertical cavo-surfaces of partial coverage preparations and to polish tooth surfaces or restorations that were touched while preparing adjacent teeth. They work well to contour and polish composites.

Finishing Strips & Saws

Compo Strips Red 100F (Diamond finishing strips)

[3M ESPE/Local Supplier](#)



Gateway Strips (Diamond finishing strips)



[Brasseler, USA](#)

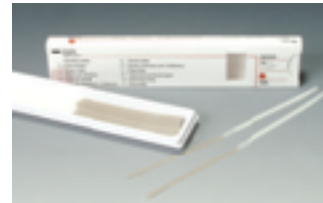
Ribbon Saw (One-sided serrated steel saws for cleaning interproximal cement)

[Pfungst & Co., Inc./Sullivan Schein](#)



Sof-Lex Finishing Strips (Medium, fine-slotted)

[3M Dental Products Co.](#)



The downside to direct dentistry is that it is virtually impossible to achieve a sufficiently smooth surface on a restoration by using a strip on the interproximal surface. We generally use strips only on direct composite restorations, rarely on indirect porcelain restorations. Occasionally, We use the fine side of a *Sof-Lex* finishing strip on an interproximal surface, but now that our lab makes all-porcelain restorations that fit as well as gold castings, there is rarely a need for interproximal finishing.

Hand Instruments

Miller. Articulating Paper Forceps

[Hu-Friedy](#) (Second one on tray set up for holding *Dapaway Dappen Dish* for delivery of primers and bonds)



Crystal HD Mouth Mirror

40% Brighter & clearer images
[Zirc Dental](#)



Mirrors (plastic disposable - used in air abrasion procedures)

[Sullivan-Schein Dental Products](#)

Packer #R-55-Clearwater (Small; used for placing gingival retraction cord. Especially valuable in performing atraumatic cord placement. [Pascal Co.](#)



Plastic Instrument (#PFIHF2, used for seating crowns)

[Hu-Friedy Co.](#)



Pedo-Explorer #2 Double End (used to clean cement fragments and to pack cord in tight proximities)

[Hu-Friedy Co.](#)



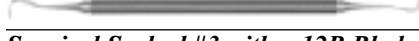
Probe 15mm (#PCPUNC15, for pre-prep measurements and visual guide)

[Hu-Friedy Co.](#)



Scaler (Sickle #SH5/33)

[Hu-Friedy Co.](#)



Surgical Scalpel #3 with a 12B Blade (used to clean composite cement from contact areas)

[Sullivan-Schein Dental Products](#)



Uni-Band Advantage (sectional matrix forceps)

[Clinician's Choice](#)



Handpieces

Slow Speed/High Speed (Fiber optics Multiflex System with *Intraflex Lux. 2* Slow speed #232OLN; [Kavo America Corp.](#)

High speed Kavo Experttorque Mini E675L: [Kavo America Corp.](#)

Mid range INTRAflex #2325LN;- [Kavo America Corp.](#)

Big Head Handpiece High Speed: Kavo Mastertorque M8900L: [Kavo America Corp.](#)



Sonic Scaler 2000 N/L (Used to remove Durelon cement when it is used as a provisional cement)

[Kavo America Corp.](#)



Prophy Angles Vantage (screw-on type)

[Miltex Instrument Co., Inc./Local Supplier](#)



Lab Handpiece (Kavo K-9 EWL)

[Kavo America Corp](#)



500 Lab Handpiece

[Brasseler USA](#)



Excellent Value

The word in hand pieces is *Kavo*. We probably use the mid-range hand piece more than any other for finalizing margins. Kavo's electric high-speed hand piece has a high torque and does not stall out. However, its large head, like that of the mid range, can create access problems. In addition, it is heavy. The *K-9 EWL* is vastly superior in smoothness and concentricity to any other lab hand piece on the market for finishing provisionals in the lab. The *Sonicflex Scaler* is great for removing *Durelon* which is used as a provisional cement.

Handpiece Lubricants

Kavo Spray (Slow speed/high speed)

[Kavo America Corp](#)



Super Lube (Prophy angle)

[Young Dental Mfg./Local Supplier](#)



Kavo Quattrocare (Automatic cleaning and lubricating system for handpieces)

[Kavo America Corp.](#)



Hemostatic Agents

Retrax AC (For routine hemorrhage control and saturating epinephrine-containing Pascal #7 Siltrax cord)



[Pascal International](#)

Hemostatic agents potentially inhibit the set of resins and VPS impression materials; after use, rinse thoroughly. One should not leave hemostatic agent-soaked cord or hemostatic agent-containing cord in the sulcus during impression making without thorough rinsing. They are all acidic and will etch teeth, open dentin tubules and cause post operative sensitivity by increasing dentin permeability.

Impression Materials

Imprint 4 [3M ESPE]

Light (71488) Syringe Pink

Heavy 71492) Tray Blue

BFC3 Powered Impression Gun

[Practicon](#)

Affinity Crystal (Clear Matrix Impression) Clinicians Choice/Schein

We use a clear bite registration for our direct injectable composite veneer protocol.



Identic (Regular set alginate mixed with distilled water and used for opposing and study models)
Local Supplier



Our preferred crown and bridge impression material is vinyl polysiloxane.

Infection Control OSHA Compliance

Asep-Gluv (sterilizable rubber gloves used in sterilization area and operatory disinfection)

[Health Sonics Corp./Local Supplier](#)

ChemSorb (Chemical spill kit)

[Health Sonics Corp./Local Supplier](#)

Barriers:

Headrest Covers Fabri-cel

Local Supplier

Tray Sleeve (covers entire instrument tray)

Pinnacle Products



Masks:

Surgical Dental Mask (Earloop)

[3M Company](#)



Sterilant/Disinfectant/Cleaner:

Acetone (Pre-soak for Clean & Dry tips, then ultrasonic in distilled water, then autoclave)

Local Hardware

Birex (Germicidal detergent for inanimate surfaces)

[Biotrol International/Local Supplier](#)

Clorox Bleach (10:1 dilution used for disinfecting alginate impressions)

Local Grocery Store

Citrizyme (Ultra concentrated enzymatic evacuation cleaner and instrument pre-soak)

Local Dental Supply

Derma Scrub (Professional Creme Soap)

Jones Medical Industries, Inc.



Enzymatic Ultrasonic Cleaning Solution.

Schein Brand

Omni-Cleaner Plus (Steam autoclave cleaner)

[Pelton & Crane/Local Supplier](#)

Valo Light Sleeve Covers –

[Ultradent Corp.](#)

Sterilizers and Monitors:

Aquasafe Water Test Kit (Used to screen bacteria levels in water source)

[HPTC/Pall Corp.](#)



Maxitest Biological Monitoring System (Infection control OSHA compliance)

[Henry Schein](#)



Steam Autoclave (For all instruments)

[Pelton and Crane](#)

Hazard Communication (OSHA Compliance System)

[OSHA.org](#)

Maxiwipe LA-
Disinfecting
disposable
towelettes Henry
Schein



Isolation Aids

Dri-Angles (Foil back for protection during preparation and air abrasion)
[Dental Health Products/Local Supplier](#)

We cannot practice without using *Dri-Angles* to isolate the cheek to avoid cutting it.

NeoDrys (Parotid saliva control)
[Microcopy](#)

Large or small *NeoDrys* are the best way to achieve long-term isolation during cementation, build-ups and final impressions. We bend the sharp edges back so they slide more easily into the mouth.



Small Cotton Rolls - Cotton rolls cut into thirds (Smaller volume, retracts lip, not as likely to get under crowns. Used to scrub preparations before vinyl polysiloxane impressions - wipe away excess cement prior to photoactivation)

Light Curing Protection

Veratti Bonding Eyewear - great fit
[Palmero Health Care](#)

Cure Shield (hand held)
[Premier](#)

Compo-Cover (Protects light cured materials)
[Practicon, Inc.](#)



Light Curing Unit

Valo Light—[Ultradent Corp.](#)

Broad band LED curing light



Virtuoso Sapphire
(Plasma Arc light
3 Second Cure)
[Den-Mat Corp.](#)



Triad 2000 (Light curing oven)
[Dentsply Trubyte](#)



Matrices



Palodent Plus (For contacts on posterior composite restorations)
[\(Dentsply\)](#)

Hawe Transparent Adapt Sectional Matrix [Kerr](#) Anterior composite restorations

Omni-Matrix (Disposable matrix retainers) - [Ultradent Corp.](#)



Tofflemire Retainers with #1 .0015 Ga Bands
[Sullivan-Schein Dental Products](#)



Measuring Devices

Spring Gauge Caliper
(0-10 mm for measuring crown thickness)

[Miltex/Henry Schein](#)
Boley Gauge Caliper

(0-100 mm for gross measurements)
[Henry Schein](#)



3 1/2 inch Dividers (for measuring VDO)

[L.S. Starrett/Jewelry Supplier](#)



Medications

Ibuprofen (Motrin), 800 mg. (prescription only)

[Whitehall-Robins/Sullivan-Schein](#)

Valium (diazepam) 5 mg.

[Roche Products, Inc./Local Pharmacy](#)
Valium can allow patients to drive within a few hours, and doesn't result in loss of memory in the office, so it mitigates some potential legal issues.

Valtrex 500 mg. 2 x daily (same as Zovirax - fewer pills) [Local Pharmacy](#)

Metal Adhesive Primer

Alloy Primer (Replaces tin plating for all metals - can be used in the mouth)

[Kuraray USA, Inc./J. Morita](#)



Miscellaneous

AED Plus Defibrillator (Product of the Year)

[Zoll Medical Corp](#)



Dress "n" Grind System (To sharpen dull polishing points)

[Brasseler, USA](#)



Nu-Block (Disposable U-Shaped mouth prop that is thin & flexible)
Efficient Dental Technologies



Stainless Steel Sink Drain Screens
Practicon, Inc.

Teflon Tape— (plumbing department)
Home Depot/Lowes/Local Hardware
(Used to protect adjacent teeth during priming, etch & etc. Also used to protect implant screws in access holes)

Tooth Mould Guide
[Ivoclar Vivadent](#)

Xenolite Lead Free X-ray Apron

(Light weight /more comfort)

[DUX Dental](#)



Z-Tray Tree
(Impression tray holder)

Zimmerman Enterprises / Henry-Schein



Mixing Pads

#945 Panavia 21/F Mixing Pads

(Used for all cements and composites). Each pad has its own dedicated pad.



[Kuraray USA, Inc./J. Morita](#)

Mouthguard Material

ProForm Laminates Mouthguards
(Clear and Multicolor)

[Dental Resources/Local Supplier](#)



The ProForm football mouthguard is excellent, as is the ProForm vacuum-adapting machine.

Sof-Tray Sheets 0.035 and 0.060 thickness.

[Ultradent Products](#)



0.035 is used for bleach & fluoride trays, some night guards and preparation guides. It is also worn by patients with multiple preps during tissue retracted phase and during provisional fabrication. 0.060 is used for night guards for excessive bruxers.

Occlusion Foil

Shimstock Occlusion Foil (Metal foil used to check occlusion and to prevent cement from bonding to adjacent teeth when using resin cement)



[Almore International, Inc.](#)

Occlusion foil is used to measure occlusion on restorations during try-in, as well as to check contacts in the lab. It can be tacked down with *Opal Dam* to protect adjacent teeth and restorations from air abrasion.

Photography

CAMERAS (DIGITAL)

Canon 5d

(Used for all intra oral photography)

Canon macro Lens EF 100mm 1:2.8

Twin Flash Diffuser



www.macrodifuser.com

Canon Macro Twin Lite MT-24EX Twin Flash

Canon MR-14EX Macro Ring Lite
[Canon USA](#)

INTRAORAL GLASS PHOTOGRAPHY MIRRORS

Chromium - [PhotoMed International](#)

Rhodium - [EMF Corporation](#)

LIP SPREADERS

Cheek Retractors

[Practicon Dental](#)





OptraGate - (Disposable lip and cheek retractor)
[Ivoclar Vivadent](#)



Polishers and Finishers (Intra-Oral)

Shofu OneGloss Cups and Points
(For polishing hybrid composites, pre-polish for provisionals and for the final touch of the prep)



Zircon-Brite Polish (Diamond polishing paste for composite and porcelain)

Midgets - White #4782 & Green #4582 (For final polishing of gold and porcelain) [Dedeco](#)



Intra-Oral Dialite Porcelain Adjustments Polishing Kit #K000010
Step 1 Blue Dialite™. (reduce polish)
Step 2 Pink Dialite™. (prepolish)
Step 3 Gray Dialite™. (high shine)

Brasseler USA

Posts

Diamond Hand Reamer #196D-050
(Used to scratch the walls of the post space to increase retention)
Komet-Brasseler

Para Post XP-Titanium Alloy Para Post XP System (Burnout casting posts)
[Coltene-Whaledent International](#)



Peeso Reamer Right Angle #1-6, Stainless Steel, 32mm
[Miltex, Inc.](#)

On the rare occasions when we place posts, we use Coltene-Whaledent products.

Protective Eyewear

Foamies
[Henry Schein](#)



Wrap around disposable PET lens used to prevent splatter & dust from entering the patients eyes. Size large tinted recommended.

Preparation Protection

Masque- (Water soluble lubricant used to slather crowns prior to cementing with resin composite luting cement)



[H.J. Bosworth/Local Supplier](#)

Masque is preferable to Vaseline, because Masque will not stick to the surface of the tooth and tissue, and is easier to rinse off.

Opal Dam (Light cured resin dam material)
[Ultradent](#)



Products Dispensed from 3 cc Syringes with Color Codes

Hemodent 3M ESPE - Red
Pure 4% CHG [Best Buy Discount Dental Supply](#) - White
www.bestbuydds.com



NaOCl [Clorox] - Orange
Everclear Grain Alcohol Everclear - Black
Tubulicid Blue [Temrex](#) - Blue
Super Seal [Best Buy Discount Dental Supply](#) - Green

Retraction Cord

#7 *Siltrax EpiRetraction Cord*
Pascal Company, Inc./Local Supplier



Only place one cord; remove cord before injecting *Light Body* with healthy tissue; remove cord after injecting *Light Body* with unhealthy tissue, then re-inject. *Siltrax* is one of the best retraction cords on the market. It must be soaked in *Retrax AC Pascal* and immediately rinsed after placement to avoid systemic epinephrine reactions. The white color also allows you to see if the cord is contaminated.

Scissors

Retrax Cutter Pascal



Ultra Trim (Vinyl scalloping scissors for bleach & fluoride trays)
Ultradent Products, Inc.



Sealants

GC Gaenial Universal Flo -GC America



We prefer flowable resin composites to use as sealants and small anterior bonding.

Separating Agent

DVA Acrylic and Plaster Separator
(Used as a separator between model and acrylic for indirect provisionals)

Dental Ventures of America



DVA Acrylic and Plaster Separator

We use to separate acrylic from a model.

MultiSEP (Releasing agent for direct paint-in provisionals and die lubrication)
GC America

Ultrasep™ II Mold Release (Spacer to compensate acrylic shrinkage for indirect provisional technique) (Ultradent) occasionally used as a separating agent in making provisionals for excessively retentive cases.



Storage Containers

Model Boxes (Double White) – *Sycom*
Poly-Cons 4 oz. (Plastic containers with attached lids to store measured alginate)

Markson Science

Sample Jars 8 oz. (With screw caps to store measured stones)
Markson Science

Syringes

Centrix Syringes S-Class - Stainless Steel (Used for injecting cores and easy to express materials)
Centrix, Inc.



The S/Class is the finest syringe on the market for injecting core paste with *Needle Tubes*.

3 cc Syringes - With *Inspiral Brush Tips*, *Blue Micro Tips*, or *Blue Mini Dento-infusor Tips* (delivery systems for multiple materials, recommended for a wide variety of uses)
www.bestbuydds.com



Syringe Tips

Blue MiniDento Infusor Tip
(Use on a 3cc syringe with *Tubulicid Blue*)
Ultradent



Inspiral Brush Tips
Use on a 3cc syringe with 4% CHG
Ultradent



Multipurpose 18 Ga. Pink Tips for DeOx *Schein*

Tapes Storage Containers

Vinyl electrical tape (Various colors for identifying *3 cc Syringes*)
Local hardware store

Toothbrush

End-Tuft Toothbrush (For general scrubbing and cleaning crown preparations prior to sealing and impressions)
Butler Co.

The *End-Tuft Toothbrush* is used on virtually every case in our office to clean up before impressions. In addition, it is given to patients for home care. The end of the brush should be bent to facilitate access to the distal aspect of second molars.

Torque Driver Set

Set DIA-250 (Used on implant screws and Johnson Screw Attachment)
Nobel Biocare Company

Tray Cleaner

Green Envy Tray Cleaner (For removing alginate) – [Whip Mix Corp.](#)



Tray cleaners facilitate cleaning of alginate from trays without scratching (saves money).

Trays (Custom)

ProCure Custom Tray (Light-cured composite wafer)
[Dental Resources, Inc.](#)

Custom trays are made for almost every master impression in Our office.

Trays (Stock)

Tray Away – [Bosworth](#)

Stock trays are used for provisional impressions and occasionally for single units, although custom trays are preferred.

Trays (Perforated)

Rim-Lock Perforated Tray (Stainless steel for alginates)
[Coe/Local Supplier](#)

Vacuum System

Shock 'ta' Clear (Highly concentrated vacuum cleaning and decontaminating tablets; facilitates removing “age old” accumulations from operatory lines)

[Palmero Health Care](#)

Vac-K 'ta' Clear (Weekly time-released maintenance, cleaning and decontaminating tablet)

[Palmero Health Care](#)

Vac Attack Premier (Daily vacuum line cleaner)

[Sullivan-Schein Dental Products](#)

Vacuum Tips

Soft-Tip Plastic Screen (Fits high volume aspirators; prevents one from grabbing the tongue, cheek, soft tissue and catches uncemented restorations)
[Quality Aspirators](#)

The *Soft-Tip screen* is a significant aid for dental assistants.

Vent-O-Vac (Short disposable high speed suction tips)
[Young Dental Mfg. Co./Local Supplier](#)



Vision Enhancers

Loupes 4.5x and 6x, 8x with 14-17“ focal length; almost all focal lengths available. – [Designs for Vision, Inc.](#)

LED Cordless Lights

[Designs for Vision, Inc.](#)



Wax

Almore Wax (For making wax sticks)
[Almore International Inc.](#)



TruWax Baseplate Wax, Extra Hard (Used to check occlusal clearance)
[Dentsply](#)

Utility Wax - Round Strips (Used to hold crown for shade verification)
[Local Supplier](#)

Wax Stick Mold

Periphery Wax – blue by [Surgident Precision Restoration Seaters](#)
[www.bestbuydds.com](#)



Wedges

Palodent Plus Wedges
([Palodent](#))

We use wedges for direct restorations, which are done infrequently in Our office.

Wedge Wands (Ultra thin wedge with handle)
[Garrison Dental Solution](#)



Digital Products:

Intraoral Scanners-
[Medit i-700](#)



Digital Design Software- [Exocad](#)



DENTAL HYGIENE MATERIALS LIST

Desensitizers

Prevent 5% Sodium Fluoride Varnish – (applied with applicator brush)
[Colgate](#)



Teethmate Desensitizer – Post prophy root sensitivity
[Kuraray/Schein/Local Supplier](#)

Electric Toothbrush

3-D Braun Toothbrush – [Oral-B](#)



Floss Dispenser

Pure Floss Dispenser



Floss

Glide Floss – [Proctor & Gamble](#)



Satin Floss – [Oral-B](#)

Waxed & Unwaxed – [Johnson & Johnson](#)

Reach Woven Fluoride Floss – [Johnson & Johnson](#)

Gum Expanding – [Butler Co.](#)



Floss Threaders

EEZ-Thru Floss Threaders – [Butler Co.](#)



Glide Threaders – [Oral-B](#)

Superfloss – [Oral-B](#)



Fluorides

IN OFFICE

Neutra-Foam 2.0% – [Henry Schein](#)



FOR HOME CARE

Prevent Gel – [Colgate](#)



Prevent Booster Plus 5000 – [Colgate](#)



Prevent Rinse – [Colgate](#)



Handpiece

Midwest RDH – [Henry Schein](#)



Cordless Handpiece Nupro- [Freedom](#)



Handpiece Lubricants

Super Lube (Prophy angle)

[Young Dental Mfg./Local Supplier](#)

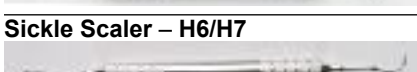


Instruments

Barnhart Curette #1/2 [Hufriedy](#)



Curettes – Gracey 1/2, 11/12, 13/14, 17/18



Sickle Scaler – H6/H7



Curved Sickle – 204S



Perio Probe – 23/OW – [Hu-Friedy](#)

Probe for Furcations 2N – [Hu-Friedy](#)
Graphite Implant Scalers – [Premier](#)

Universal Implant Scaler TISL5/6 – [Brasseler](#)



Mouth Mirror - [Zirc](#)



Cavitron Bobcat Pro Ultrasonic Scaler – [Henry Schein](#)



Ultrasonic Scaler- [Ultrasonic Services, Inc](#) - [USI](#)

Swivel Ultrasonic Inserts- [Henry Schein](#) - #10 Universal



[Henry Schein](#) #100 Thin
USI- Ultrasonic Scaler [Houston, TX](#)



Loupes

Loupes 2.5x/3.5x with 14" focal length; almost all focal lengths available. – [Designs for Vision, Inc.](#)



Prophy Angle

Vantage Autoclavable – [Local Supplier](#)

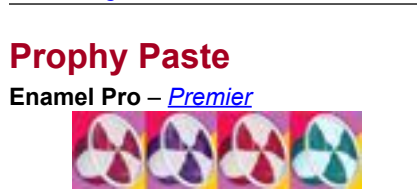


Contra Elite Flex (Young disposable prophy angles) – [Local Supplier](#)



Prophy Cup

Densco Blue, Webbed – [Waterpik Technologies](#)



Prophy Paste

Enamel Pro – [Premier](#)



Nupro – [Dentsply](#)



Sharpening Stones

Ceramic Stone – (Med. Grit) – [Hu-Friedy](#)



Honing Channel Sharpening Stone – [Cutting Edge Technology](#)

Toothbrushes

DenTek Dual Action Cleaners micro-sized pick and interdental brush – [Dentek](#)

End Tuft Toothbrush – #308 – [Henry Schein](#)



Sulcular Toothbrush – #210 --[Butler Co.](#)

Go Betweens – [Butler](#)



Rubber Tip Stimulator – [Butler Co.](#)



Soft Picks – [Butler](#)



Piksters Interdental Brushes – [Henry Schein](#)



Technique Toothbrush Butler
Compact (soft), Full (Soft) & Youth
– [Henry Schein](#)



Oral B Compact 35 Sensitive
– [Oral B](#)



Topical Anesthetics

Cetacaine Liquid – [Henry Schein](#)



Ultracare – [Ultradent Products, Inc.](#)



Ultrasonic Cleaners

Tartar & Stain Remover –
[Sullivan-Schein](#)

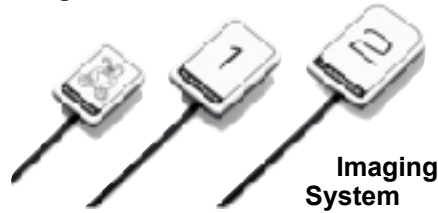
Ultrasonic Solutions

Brite Shield – (Instrument cleaning
presoak
[Premier](#)



X-Rays

Planmeca Prosensor HD
Digital



Rinn XCP.ORA (Ring and Arm
System)

Software

Curve Dental Management Software. is a cloud-based application for dental group practices. The information is fully secure as Curve Dental manages all backup and security at their end, ensuring that practices do not have to worry about upgrades or server maintenance



LABORATORY MATERIALS LIST

Acrylic Resin

Pi-Ku-Plast - [Bredent/USA](#)

(Used for connecting verification jigs and custom abutments for implants)



Arti-Foil Red – [Patterson Dental](#)
Accufilm 2 For Contacts and Occlusion

Die Base Separator

Iso-Fix - Renfert/Denerica Dental Corp

Die Hardener

Die Stone Conditioner [DVA](#)

Die Spacer

(for painting dies to allow room for cement)

Henry Schein

Adhesives

Insta-cure (for gluing dowel pins)

Devine Dental Supply

Supplier: [Americana Dental, Inc.](#)

Zapit (for filling in undercuts on dies)

Dental Ventures of America



Attachments

(For Restorative Prosthetics)

P-D Attachment - *Dental Distributors, Inc.*

Neoss Implant System

(Neoss) 98% of our implants placed by our surgeons are Neoss.



Die Space Remover

Pretty Nails Instant polish remover –
Local Drug Store

Die Saw

Die Saw Disc Diamond Coated Disc
(Garreco) 45mmX 0.35mm



Air Abrasive Unit

Basic Quattro IS (instant stop)

Renfert/Denerica Dental Corp.

Articulators

Balance Articulator - Almore International, Inc.



Ulti-Mate Articulator – [Whip Mix Corp.](#)



Block-Out Resin

(Light cured for model corrections)

[Ultradent Products, Inc.](#)

Bonding Agent

Palavit G LC Liquid

(photo cure bond agent for acrylic to composite) - [Kulzer, Inc.](#)

Brushes

Renfert KolinskWe (for porcelain buildup) [Dental Supplies Unlimited](#)

000 Red Sable KolinskWe (for painting die spacer) [Dental Supplies Unlimited](#)

Disclosure Powder

Quick Check – [Vacalon International](#)



Centric By Ney – [Dentsply](#)

Articulating Ribbons

Madame Butterfly Articulating Silk

[Almore International, Inc.](#)

Ceramic Primer

Clearfil Ceramic Primer Plus #2250KA

(Used for priming zirconia restoration prior to cementation. It has a molecule that works with zirconia)

[Kuraray USA, Inc.](#) /
Local Supplier



Dowel Pins

Brass Pin USA – [Gresco Products, Inc.](#)



Reverse Dowel Pins – [Gresco Products, Inc.](#)



Dowel Pin Locators

Tunnel Mate – [Zahn Dental Company](#)

Electric Waxer

Ultra-Waxer – Kerr Corp.



Etching Agents

Ceram-Etch – Feldspathic [Gresco Products Inc.](#)



Ceramic-Etching Gel – [Gresco Products Inc.](#)

IPS Ceramic-Etching Gel – [Ivoclar Vivadent](#)



85% Phosphoric Acid – [Mallinckrodt Baker](#)

Flexible Wax Sprues

Bego 3.5mm Sprue Wax- [Bego](#)
Ash Free Ref# 40087 (For all gold restorations, 8 gauge/large, 10 gauge/medium and 12 gauge/small)

Glue Gun & Glue Sticks

Swingline – 33007 – [Local Hobby Shop/Hardware Store](#)
(for luting models together)

Golds

High Purity 77 – [Argen Corp](#)
(inlays and onlays).
Argedent 52 SF – [Argen Corp.](#)
(ceramics, bridges, posterior single units)

Gold Burnout Oven

Ibex Multi Stage and Single Stage - [Ibex](#)



Handpiece

Hydro Air Carver – [Americana Dental](#)



K-9 Lab Handpiece – [Kavo America](#)
installation EWC 900/950, 1,000-25,000 RPMs)
K5 Plus (Knee Control) [Kavo America](#)



Impression Debubblizer

Delar Surfactant – [Delar Corp](#)
(for stone models)



Indexes – Incisal Edge & Facial

Matrix Form 70 A&B 5000g Silicone–
[Anaxdent](#)

Sil-Tech Putty – [Ivoclar](#)



Investments

Follow manufacturer's recommended distilled water/liquid ratio for optimum results.

Micro Star Investment – [Jensen Dental](#)



ISP PressVest – [Ivoclar Vivadent](#)
(For investing wax patterns for e.max in both powder and liquid form)



Silicone Spray – [Dentsply](#)
(All-purpose release agent for use on metals, many plastics, plaster, stone, amalgam and compounds)



IPS e.max Press Oven

Press System – [Ivoclar Vivadent](#)



Zubler Pressing Oven - [Zubler](#)

Metal Finishing Burs, Wheels & Rubber Points

¼ Round, ½ Round, #700 Fissure, 274 UF Friction Grip – [Brasseler USA, Inc.](#)

CARBIDE BURS
C426XF 023, C33RXF 023, C33RXF 014, 305102 – [Coltene Whaledent.](#)

WHEELS
Black Silicone, Pink High Lustre Silicone – [Coltene Whaledent.](#)

LD Grinders
Ceramics/Lithium Disilicate – [Brasseler USA](#)



POINTS
Red Rubber XX12
2.0 & 3.0 Med. Black Occlusal Access Point
2.0 & 3.0 Fine Red Brown Occlusal Access Point
2.0 & 3.0 Extra Fine Green Occlusal Access Point
Pink High Lustre Silicone Point
Metal Cut Off Disk #526M – [Coltene Whaledent](#)
Ultra Thin National Keystone – [Dental Laboratory Discount Supply](#)

Microscope With Fiberoptic Lighting

Mantis X4 – [Vision Engineering](#)

Model Trimmer

10 Inch and 12 Model Trimmers – [Whip Mix](#)



Model Sealer

Johnson Pledge FloorCare – Local Store



Mold Guides

Tru Byte Bioform and Bioblend – [Dentsply Corp./Local Supplier](#)

Misc

Stalite Solution (Special liquid solution makes harder and smoother stone models & dies) – [Buffalo Dental](#)



Super Peg IWeCeramic firing support. – Harvest Dental/Zahn Dental

Polycril (Pumice alternative) created especially for acrylic and composites. – Henry Schein

Pinsetter

Pin dex System—[Coltene IWeLaser – \[Coltene-Whaledent\]\(#\)](#)



Polishing Compound

Roughe – [Zahn](#)

Porcelain

Initial Lisi (Lithium disilicate)
[GC American](#)
Gc Lustre Paste- Stain Kit

Porcelain Finishing Burs

F6 CARBIDE
170L
556L
ETUF4
6801
#35 Inverted
SLOW SPEED DIAMOND
801 Round
850 Long Round Taper
836 Flat End Cylinder
Thin Diamond Disk – [Brasseler USA, Inc.](#)

Porcelain Polishing

Zircon Brite Polishing Paste



Porcelain Finishing Wheels & Disks

Dialite Polisher
Blue – L26DBC
Red – L26DRM



Red Flame HZ DG.11 – [Brasseler USA](#)
Thin Diamond Disk
Ultra Thin multipurpose Abrasive Disks
– [Brasseler USA](#)

Felt Wheels
Green Med. Disk (6113-200-1)
Flexible Disk (invaluable for contouring
porcelain) – [Cardinal Dental Instruments](#)

Porcelain Glaze

Fine Grain Stains – Low Temp Glaze
Lustre Paste - GC America

Red Handle Knife

#6 with blade #25
[Bard Parker Company a Div. of Becton,
Dickinson & Co./Local Supplier](#)

Refractory Marking Pencil

J.H.T. Marking Pencil – [Whip Mix Corp.](#)

Sand For Sandblaster

100 micron aluminous oxide (for
divesting and abrading metal framework)
[Ivoclar](#)

80 micron glass beads (for divesting
refractory material and abrading the
intaglio of provisionals) [Ivoclar](#)

Scales

OHAUS Electronic C305P (for weighing
gold) – [Dental Laboratory Discount
Supply](#)

Acculab V-3000 (for measuring stone) –
[Whatman Lab Sales, Inc.](#)

Soft Tissue Models

Gingifast Rigid – [Zhermack](#)



Soldering Torch

Metalor Soldering/Casting Torch Kit

Steamer

Steaman Constant – [Bar Instruments](#)

Stones

Snap-Stone - fast setting stone
(26 ml Stalite to 100 gm gm gm stone–for
indirect provisional model) – [Whip Mix
Corp./Local Supplier](#)



ResinRock

(50 gms stone/10 cc distilled water–for all
dies and opposing models) – [Whip Mix
Corp./Local Supplier](#)



Die-Stone Peach (for die bases &
dentures)

(150 gms stone/34 cc water) – [Modern
Materials/Americana Dental.](#)

White Mounting Stone (all mountings)
(26 cc water to 100 gm stone) – [Whip Mix
Corp./Local Supplier](#)

Vacuum Investor

VPM2 – Whip Mix Corp.

Waxes

(For Crown and Bridge Work)
Pico Sticky Wax – [Denerica Dental
Corporation](#)

Pink Base Plate Wax - Extra Hard –
Hygenic Dental Mfg. Co./Local Supplier

Solid Rope Wax (for spruing ceramic
golds, 6, 8 and 10 gauge) – Local Supplier

Creare Wax–[American Dental Supply](#)
Dip Wax Geo Wax Renfert

Yeti Ash Free Sculpting Wax – [H. B.
Enterprises](#)